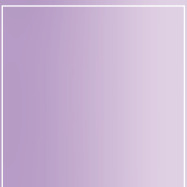
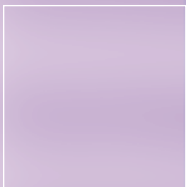
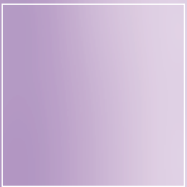
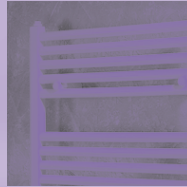


Scala & Round



HIGH-TECH STYLE AT A
HEART WARMING PRICE



SCALA/ROUND

The Scala and Round towel radiator ranges from MHS are a breakthrough in the heated towel rail market. Sleek, sophisticated and stylish, they offer luxury at revolutionary prices that will appeal to both the domestic user and the commercial developer.

Available in white, a stunning new gold option, the increasingly popular chrome and a range of attractive coloured finishes, these radiators provide stylish bathroom heating at newly affordable prices, together with ingenious solutions for areas where wall space is limited.

The Scala and Round offer ease of cleaning where hygiene is important and fast towel drying.



Scala Chrome with Solar Valves



Scala Gold with Gyro Gold Valves

A Summer electrical option is also available allowing towel drying during Summer months when the central heating is switched off.

Scala

- 28 sizes
- 4 heights from 800mm to 1800mm
- 7 widths from 450 to 1050mm

Round

- 24 sizes
- 4 heights from 800mm to 1800mm
- 6 widths from 445 to 795mm



Round White with Gyro White Valves



Round Chrome with Gyro Chrome Valves

accessories

The finished look of the Scala or the Round may be enhanced by the addition of an MHS designer valve.

Gyro valves

Available with white, chrome or coloured heads also available as a TRV (Thermostatic Radiator Valve). Gyro is available as a straight valve for pipework rising from the floor or angled valve with pipes going through the wall.



Coloured Heads
Electrical element
Chrome or Gold
White Head



Radius Straight and angled valves.



Solar Straight and angled valves.



Belgravia straight valves - chrome only.
Belgravia angled valves - gold or chrome.

MHS provides a range of accessories including pairs of towel hooks and additional towel hangers in two widths 400mm or 600mm, all in white or chrome.



Chrome Towel Hook



Chrome Towel Holder

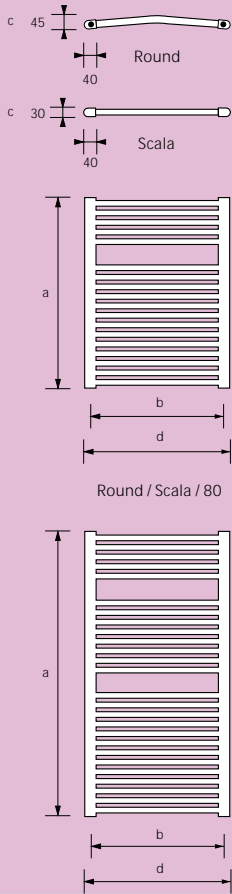


White Towel Holder



White Towel Hook

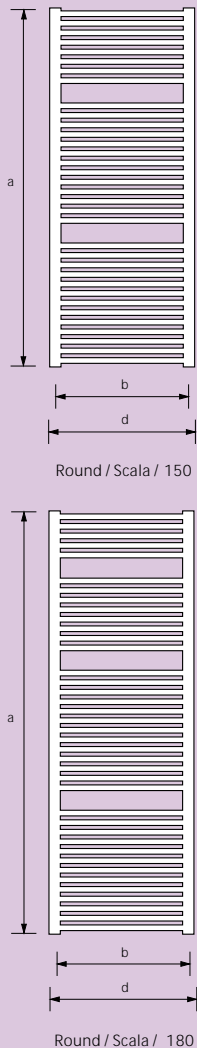
Scala



Model	Height (a) (mm)	Centres (b) (mm)	Depth (c) (mm)	Width (d) (mm)	Weight (Kg)	Water Content (Lit)	Heat Output Watts White 90-70-20°C	Heat Output Watts Chrome/Gold 90-70-20°C	Summer Electrical Option White	Summer Electrical Option Chrome/Gold
Scala 45/80	800	400	30	450	7.5	4.10	443	317	350W	250W
Scala 45/120	1195	400	30	450	11.0	6.00	656	447	350W	350W
Scala 45/150	1502	400	30	450	14.1	7.80	830	572	600W	450W
Scala 45/180	1780	400	30	450	16.0	9.00	1000	715	600W	450W
Scala 50/80	800	450	30	500	8.0	4.40	492	349	350W	250W
Scala 50/120	1195	450	30	500	12.0	6.50	725	495	450W	350W
Scala 50/150	1502	450	30	500	14.6	8.45	914	631	600W	450W
Scala 50/180	1780	450	30	500	17.5	9.70	1095	771	900W	600W
Scala 55/80	800	500	30	550	8.5	4.75	541	382	350W	250W
Scala 55/120	1195	500	30	550	13.0	7.00	793	542	600W	450W
Scala 55/150	1502	500	30	550	16.0	9.15	996	689	900W	600W
Scala 55/180	1780	500	30	550	19.0	10.40	1188	852	900W	600W
Scala 60/80	800	550	30	600	9.0	5.10	590	414	350W	350W
Scala 60/120	1195	550	30	600	14.0	7.50	862	590	600W	450W
Scala 60/150	1502	550	30	600	17.2	9.83	1080	748	900W	600W
Scala 60/180	1780	550	30	600	20.5	11.20	1283	920	900W	600W
Scala 65/80	800	600	30	650	9.5	5.50	638	446	350W	350W
Scala 65/120	1195	600	30	650	15.0	8.00	931	636	600W	450W
Scala 65/150	1502	600	30	650	18.4	10.50	1162	807	900W	600W
Scala 65/180	1780	600	30	650	22.0	12.00	1379	990	900W	600W
Scala 80/80	800	750	30	800	11.0	6.50	783	545	600W	450W
Scala 80/120	1195	750	30	800	18.0	9.50	1135	778	900W	600W
Scala 80/150	1502	750	30	800	21.9	12.55	1411	982	900W	600W
Scala 80/180	1780	750	30	800	26.0	14.30	1659	1193	1200W	900W
Scala 105/80	800	1000	30	1050	13.5	8.30	1026	705	600W	450W
Scala 105/120	1195	1000	30	1050	23.0	12.00	1476	1007	900W	600W
Scala 105/150	1502	1000	30	1050	27.9	15.95	1822	1263	1200W	900W
Scala 105/180	1780	1000	30	1050	34.0	18.10	2123	1516	1200W	1200W

Maximum working pressure: 10 BAR Heat unit conversion: watts x 3.412 = Btu/hr

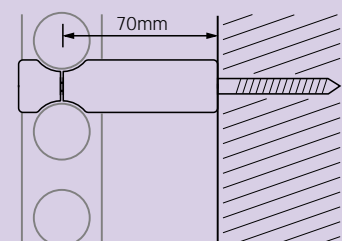
Round



Model	Height (a) (mm)	Centres (b) (mm)	Depth (c) (mm)	Width (d) (mm)	Weight (Kg)	Water Content (Lit)	Heat Output Watts White 90-70-20°C	Heat Output Watts Chrome/Gold 90-70-20°C	Summer Electrical Option White	Summer Electrical Option Chrome/Gold
Round 45/80	800	395	45	445	7.5	4.10	441	322	350W	250W
Round 45/120	1195	395	45	445	11.0	6.00	660	464	350W	350W
Round 45/150	1502	395	45	445	14.1	7.80	823	578	600W	450W
Round 45/180	1780	395	45	445	16.0	9.00	966	697	600W	450W
Round 50/80	800	445	45	495	8.0	4.40	488	354	350W	250W
Round 50/120	1195	445	45	495	12.0	6.50	728	517	450W	350W
Round 50/150	1502	445	45	495	14.6	8.45	911	644	600W	450W
Round 50/180	1780	445	45	495	17.5	9.70	1074	774	900W	600W
Round 55/80	800	495	45	545	8.5	4.75	535	378	350W	250W
Round 55/120	1195	495	45	545	13.0	7.00	796	569	600W	450W
Round 55/150	1502	495	45	545	16.0	9.15	998	706	900W	600W
Round 55/180	1780	495	45	545	19.0	10.40	1181	850	900W	600W
Round 60/80	800	545	45	595	9.0	5.10	582	423	350W	350W
Round 60/120	1195	545	45	595	14.0	7.50	863	621	600W	450W
Round 60/150	1502	545	45	595	17.2	9.83	1086	776	900W	600W
Round 60/180	1780	545	45	595	20.5	11.20	1289	927	900W	600W
Round 65/80	800	595	45	645	9.5	5.50	630	457	350W	350W
Round 65/120	1195	595	45	645	15.0	8.00	932	674	600W	450W
Round 65/150	1502	595	45	645	18.4	10.50	1172	843	900W	600W
Round 65/180	1780	595	45	645	22.0	12.00	1396	1002	900W	600W
Round 80/80	800	745	45	795	11.0	6.50	769	561	600W	450W
Round 80/120	1195	745	45	795	18.0	9.50	1133	826	900W	600W
Round 80/150	1502	745	45	795	21.9	12.55	1434	1037	900W	600W
Round 80/180	1780	745	45	795	26.0	14.30	1719	1225	1200W	900W

Note: EN442 outputs at 50°C ΔT available on request.
Guarantee: Radiator 5years, electrical element 1year.

Wall fixing bracket



Feature Radiators

Email: contactus@featureradiators.co.uk Tel: 01274 567789 Fax: 01274 561183

www.featureradiators.com

This publication is issued subject to alteration or withdrawal without notice.
The illustrations and specifications are not binding in detail. All offers and sales are subject to the Company's current terms and conditions of sale.

QW/08/01