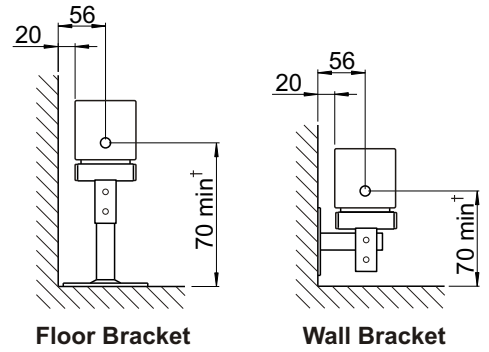
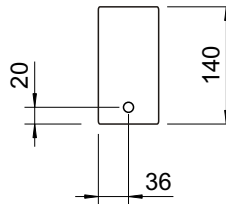
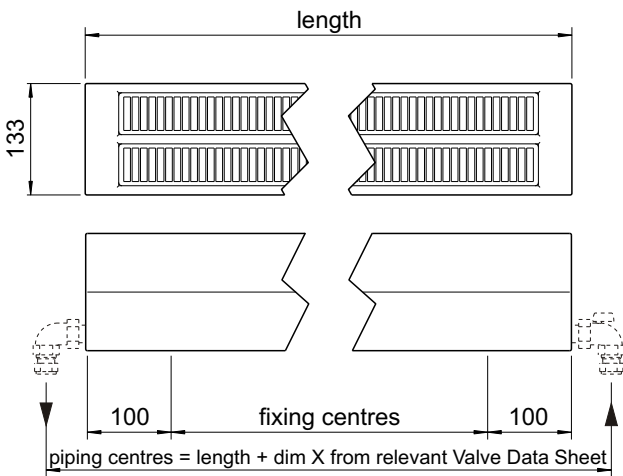


note: flow & return can be reversed if required

Model SS

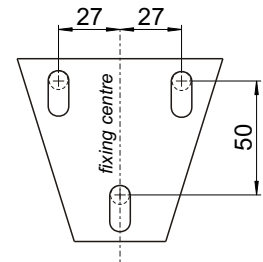
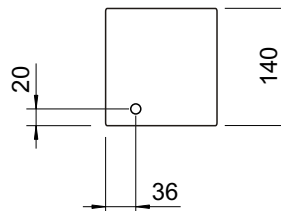


† this dim 90mm min for SD model



note: flow & return can be reversed if required

Model SD



Hole Pattern for Floor & Wall Bracket

All dimensions shown are in millimetres

- Test pressure: **5.2 BAR**
- Max working pressure: **4 BAR (6 or 10 bar available)**
- Max working temperature: **120° C**
- All steel construction: **2mm end header thickness**
1.25mm wall thickness
- Connections: **½ inch BSP opposite end tappings**

Heat output determined in accordance with EN 442

Reg. Number 3810E-3835E

Manufactured for Bisque by Arbonia AG of Switzerland

Model	Output ΔT=50K Watts	Output ΔT=60K Watts	n	Water Content litres	Weight kg	Height ± 2mm	Length ± 2mm	Depth ± 2mm	Fixing Centres ± 2mm
SS 14-100	510	647	1.30	2.3	12	140	1000	72	800
SS 14-120	613	776	1.30	2.8	14	140	1200	72	1000
SS 14-160	817	1035	1.30	3.7	19	140	1600	72	1400
SS 14-200	1021	1294	1.30	4.6	23	140	2000	72	1800
SD 14-100	825	1044	1.29	3.4	19	140	1000	133	800
SD 14-120	990	1253	1.29	4.1	23	140	1200	133	1000
SD 14-160	1321	1671	1.29	5.4	30	140	1600	133	1400
SD 14-200	1651	2088	1.29	6.8	38	140	2000	133	1800

Tools & Material Required

Wall plugs - 10mm
 Screws - 7mm diameter x 60mm length
 Suitable valves
 PTFE tape
 Silicone thread sealant
 Tape measure
 Allen key - 13mm & 12mm (when installing Bisque valves)
 Spanner - 14mm
 Screwdriver - medium flathead
 Electric drill
 Masonry drill bit - 10mm diameter
 Spirit level

Key	Component	Qty
A	Air Vent - 1/4"	1
B	Wall Plug*	6
C	Bracket	2
D	Screw - Hex Head, 7mm dia x 60mm*	6
E	Plastic Tab	4
F	T-bracket	2
G	End Cap	4
H	Clip	2
I	Clamp	2
J	Washer	2
K	Nut	2
L	Air Vent Key	1

* Wall Plugs & Screws not supplied

Assembly Instructions

Sufficient PTFE tape must be applied to valve-tail threads prior to their installation.
 Silicone thread sealant should be applied to all threaded components manufactured with 'O-rings'.

Fit valve tails, using correct size Allen key.

Fit air vent (A).

Accurately mark out bracket holes on wall or floor to dimensions as shown on Technical Data Sheet.

Drill 10mm diameter holes to a minimum depth of 65mm & insert wall plugs (B).

Attach brackets (C) to wall or floor with screws (D) as shown.

Fit plastic tab (E) into T-bracket (F).

Wall Mounting:

Slide T-Bracket assembly (E & F) onto horizontal bracket (C).

Cut bracket (C) stem to suit & insert end caps (G).

Secure T-bracket assembly (E & F) onto bracket (C) by tightening screws.

Floor Mounting: (not shown)

Cut height of stem on bracket (C) to suit.

Fit T-bracket assembly (E & F) onto vertical stem of bracket (C) and tighten screws.

Assemble clip (H) with clamp (I) using washer (J) & nut (K).

Hang each clip (H) over top of a single convection fin and gently tighten clamp (I) to the underside of brackets (C) using nuts (K).

Plumb radiator to heating circuit with flow opposite air vent.

