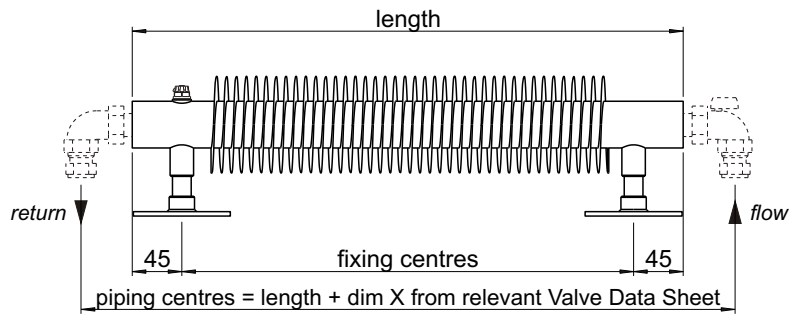
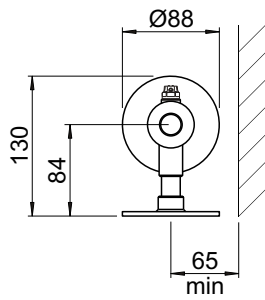
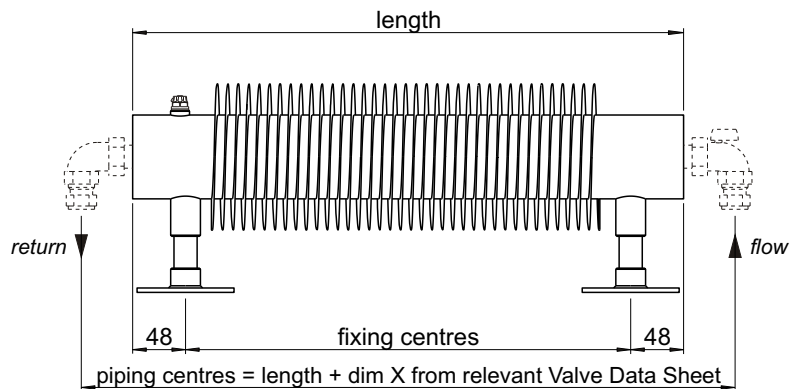
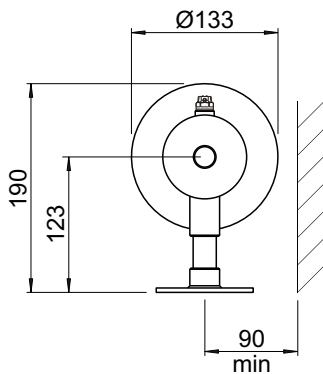


**SMALL DIAMETER - FF SERIES**



**LARGE DIAMETER - XFF SERIES**



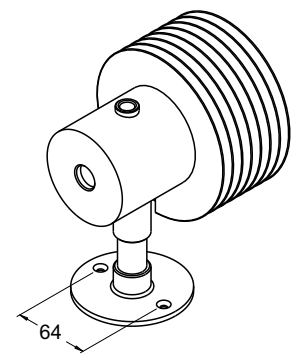
All dimensions shown are in millimetres

- Test pressure: **12 BAR**
- Max working pressure: **8 BAR**
- Max working temperature: **95° C**
- All steel construction
- Connections: **½ inch BSP opposite end tapplings**

**This radiator may only be installed horizontally on floor**

Heat output determined in accordance with EN 442

Manufactured for Bisque in Italy



Mounting Foot Detail

| Model   | Output*<br>ΔT=50K<br>Watts | Output*<br>ΔT=60K<br>Watts | n    | Water<br>Content<br>litres | Weight<br>kg | Height<br>± 2mm | Length<br>± 2mm | Tapping<br>Centres<br>± 2mm | Fixing<br>Centres<br>± 2mm |
|---------|----------------------------|----------------------------|------|----------------------------|--------------|-----------------|-----------------|-----------------------------|----------------------------|
| FF-100  | 269                        | 336                        | 1.23 | 1.1                        | 7            | 130             | 1000            | n/a                         | 910                        |
| FF-150  | 413                        | 517                        | 1.23 | 1.6                        | 11           | 130             | 1500            | n/a                         | 1410                       |
| FF-200  | 557                        | 706                        | 1.30 | 2.2                        | 14           | 130             | 2000            | n/a                         | 1910                       |
| XFF-100 | 401                        | 504                        | 1.25 | 4.1                        | 11           | 190             | 1000            | n/a                         | 904                        |
| XFF-150 | 616                        | 774                        | 1.25 | 6.8                        | 17           | 190             | 1500            | n/a                         | 1404                       |
| XFF-200 | 831                        | 1044                       | 1.25 | 8.1                        | 22           | 190             | 2000            | n/a                         | 1904                       |

\* for chrome finish reduce shown output by 12%

## Tools & Material Required

Screws - 4mm diameter x 60mm length  
 Suitable valves  
 PTFE tape  
 Silicone thread sealant  
 Tape measure  
 Allen key - 13mm & 12mm (when installing Bisque valves)  
 Spanner - 17mm  
 Screwdriver  
 Electric drill  
 Masonry drill bit - to suit screw

| Key | Component               | Qty |
|-----|-------------------------|-----|
| A   | Air Vent - 1/4"         | 1   |
| B   | Screw - 4mm dia x 60mm* | 6   |
| C   | Air Vent Key            | 1   |

\* Screws not supplied

## Assembly Instructions

**Sufficient PTFE tape must be applied to valve-tail threads prior to their installation.**  
 Silicone thread sealant should be applied to all threaded components manufactured with 'O-rings'.

Fit valve tails, using correct size Allen key.

Fit air vent (A).

Accurately mark out holes for mounting feet on floor to dimensions as shown on Technical Data Sheet.

Drill four holes to suit screws (B).

Fix radiator to floor with screws (B).

Plumb radiator to heating circuit with flow opposite air vent.

