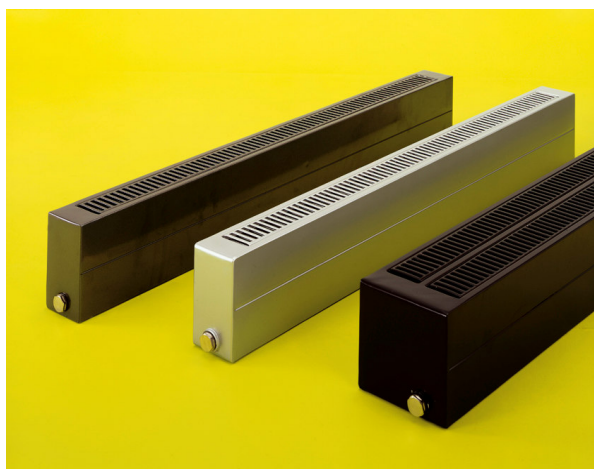


feature radiators

CONVECTOR

price list with effect from 1st February 2010



Bold in blue with chrome grilles, or shy and retiring with neutral shades, the long, sleek Convector provides the ideal heating solution where windows reach almost to the floor.

central heating radiators

| model | height (mm) | width (mm) | depth (mm) | output watts / btu | white £ | aluminium ral 9006 £ | colours £ | stainless steel grille £ |
|-----------------|-------------|------------|------------|--------------------|------------|----------------------|-----------|--------------------------|
| SS14-100 | 140 | 1000 | 73 | 622 / 2121 | 343 | 395 | 429 | 11 |
| SS14-120 | 140 | 1200 | 73 | 747 / 2546 | 370 | 426 | 463 | 11 |
| SS14-140 | 140 | 1400 | 73 | 871 / 2971 | 410 | 472 | 513 | 12 |
| SS14-160 | 140 | 1600 | 73 | 996 / 3396 | 430 | 495 | 538 | 12 |
| SS14-200 | 140 | 2000 | 73 | 1244 / 4244 | 474 | 545 | 598 | 12 |
| SD14-100 | 140 | 1000 | 134 | 1083 / 3691 | 503 | 579 | 629 | 14 |
| SD14-120 | 140 | 1200 | 134 | 1299 / 4430 | 575 | 661 | 719 | 16 |
| SD14-140 | 140 | 1400 | 134 | 1516 / 5169 | 607 | 698 | 759 | 17 |
| SD14-160 | 140 | 1600 | 134 | 1732 / 5905 | 671 | 772 | 839 | 17 |
| SD14-200 | 140 | 2000 | 134 | 2165 / 7382 | 764 | 878 | 955 | 18 |

- white (RAL 9010): all sizes usually in stock in the UK / colours (including aluminium) and stainless steel grilles (non-stock): please allow around 8 - 10 weeks
- made of steel
- convector supplied with dual-function brackets for wall or floor-mounting
- convector prices include grilles in the same colour as the radiator; stainless steel grilles available as a special order for an extra charge
- other lengths, heights and depths available by special order
- distance from wall to front face – add 20mm to depth of convector to allow for brackets
- approximate pipe centres can be provided if you wish to install your pipework in advance of receiving your radiator. radiators are supplied with the necessary fixings i.e. brackets, spacers, air vents etc (note: screws are not supplied)
- side valve connections, so add an extra 150mm to the width of the radiator to allow for valves (these are not pipe centres)
- to complete the look see our valves page (valves are not included as standard)
- nationwide delivery available – usually £25 per consignment
- to order or for further information, please call or email
- heat outputs are shown at operating temperatures of 90/70/20 ($\Delta t 60^{\circ}\text{C}$)
- all sales are subject to our standard terms and conditions a copy of which can be downloaded from our website

the above prices are exclusive of VAT

www.featureradiators.com

bingley railway station, wellington street, bingley, west yorkshire bd16 2nb
tel. 01274 567789 fax. 01274 561183
email: contactus@featureradiators.co.uk